

Infrastructure Coordination

May 12th, 2026 10:00 AM – 11:00 AM

Welcome and Background on Integrated Infrastructure

Kelly Karll

Environment & Infrastructure
Manager, SEMCOG

Welcome & Housekeeping

- ✓ Make sure your microphones are set to mute
- ✓ Put your name and organization in the chat
- ✓ Use the chat box to ask questions throughout the presentation.



We will have a Q&A session at the end!

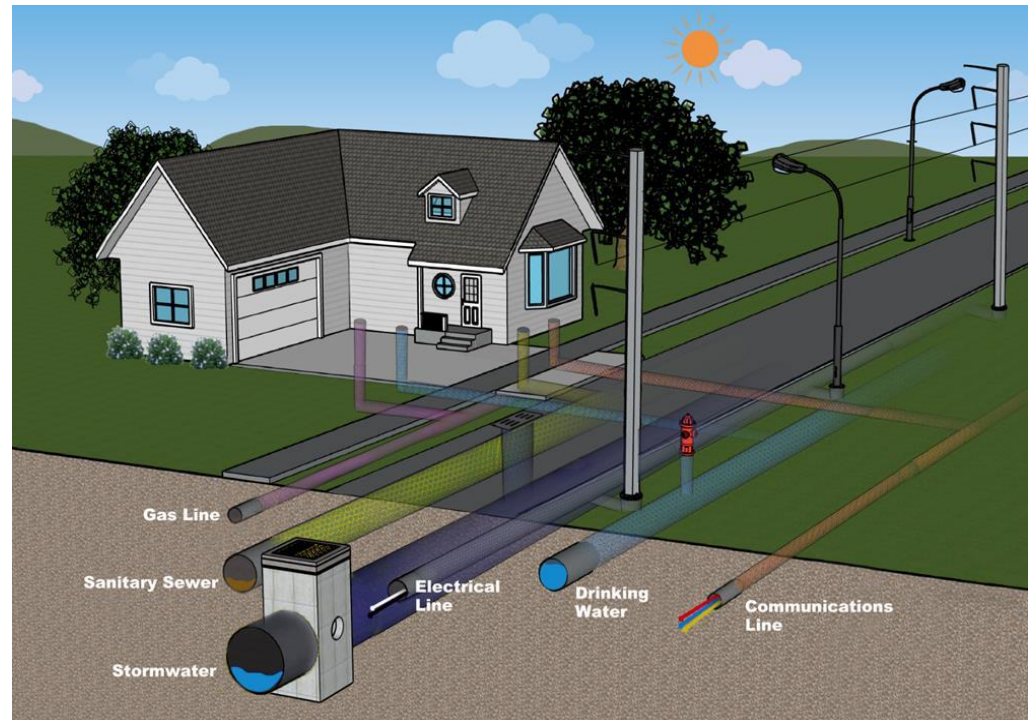


Today's agenda

- I. Welcome and Background on Infrastructure Coordination
- II. Background on Michigan Infrastructure Council (MIC)
- III. Introduction to RICH and MiDIG
- IV. What to know before you start
- V. RICH Walkthrough
- VI. Demo of CIP Upload Process
- VII. Case Study: DTE
- VIII. Questions

Southeast Michigan Regional Infrastructure Coordination Hub (RICH)


SEMCOG's Goal:
Identify and designate a
process to plan, analyze,
and coordinate asset
management across
assets and asset owners
at the regional level



2050 REGIONAL TRANSPORTATION PLAN
VISION 2050

Regional Policy

- Setting Goals, Objectives, Strategies, Performance Measures
- 20+ year timeframe

 Seek input from other infrastructure providers
 Align local policies with infrastructure coordination



Program Development

Asset Management Plans (TAMP), Application Projects

- TAMP required every 3 years for road agencies with 100 mile network
- Asset data inventory
- Performance goals
- Risk of failure analysis
- Anticipated revenues and expenses
- Performance outcomes



Project Delivery

- Cities and Counties
- Implementing Projects and Initiatives

 Permit alignment and coordination



Project Selection and Programming

- MDOT Five Year Program
- Transportation Improvement Plan

 Seek out funding alignment
 MDOT/EGLE coordination with funding



Infrastructure Coordination
 TAMP/CIP/Utilities

- Stakeholder Coordination between Road/Water/Sewer/utility agencies
- To review DRAFT Projects
- Utilize Michigan Infrastructure Council (MIC) Portal

 Identify projects to align

Supporting Local Infrastructure Planning

MIC-SEMCOG Partnership

- MIC Project Portal (MiDIG)
- Collect local capital improvement project plans.
- Training and webinars on using the MIC Project Portal
- Facilitate regional infrastructure meetings
- Provide asset management training and resources.



Engineering Consultant Support to Local Agencies

- Mapping Capital Improvement Projects
- Uploading to SEMCOG Hub
- Guidance on Asset Management
- Leading Technical Advisory Team
- Assistance with WAMC Surveys
- Evaluating Coordination Opportunities

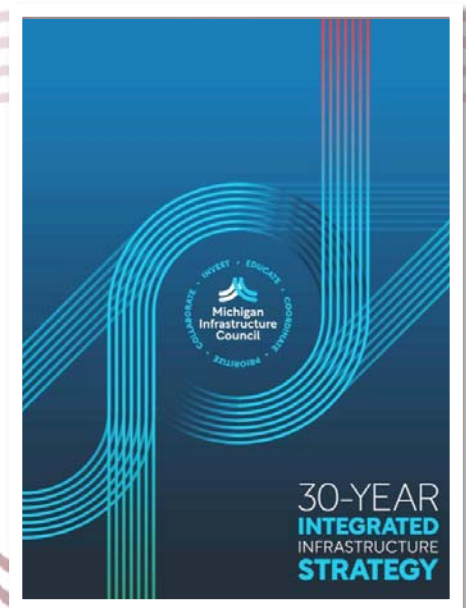


Background on Michigan Infrastructure Council

Nathan Hamilton

State Administrative Manager, Michigan Infrastructure
Council - Michigan Department of Treasury

Integrating Michigan's Infrastructure



MIC Background

30-YEAR INTEGRATED INFRASTRUCTURE STRATEGY



Culture of Asset Management



Regional Infrastructure
Coordination Hubs (RICH)



Unified Planning and Regulatory
Framework



Rethinking Rates and Revenues



Efficient and Green Public
Infrastructure Systems

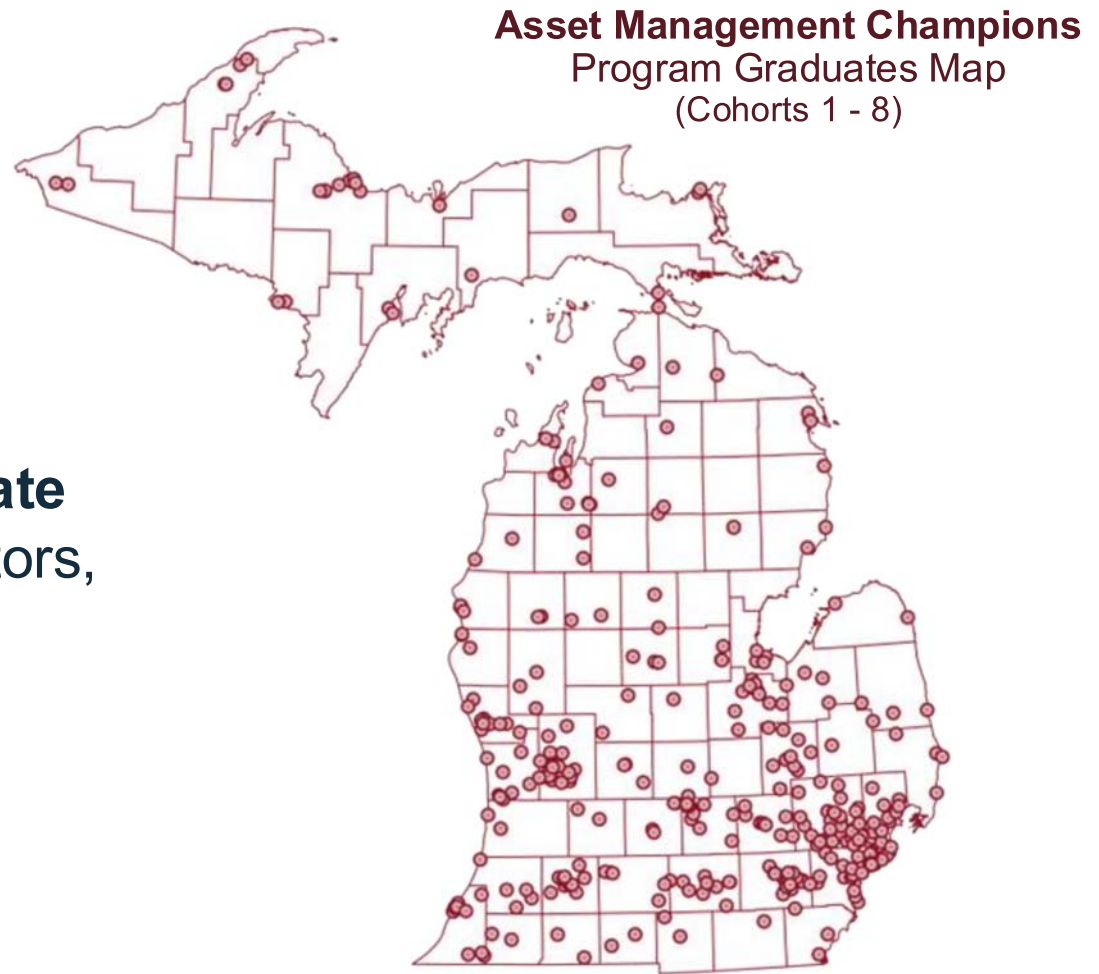


Leaders in Emerging Technology



Asset Management Champions

- ✓ **Free** Online Training & CECs
- ✓ Applicable to All **Public & Private Infrastructure** Owners, Operators, & Leaders in Michigan
- ✓ Offer Two **Cohorts Annually**
- ✓ **800 Graduates** Statewide



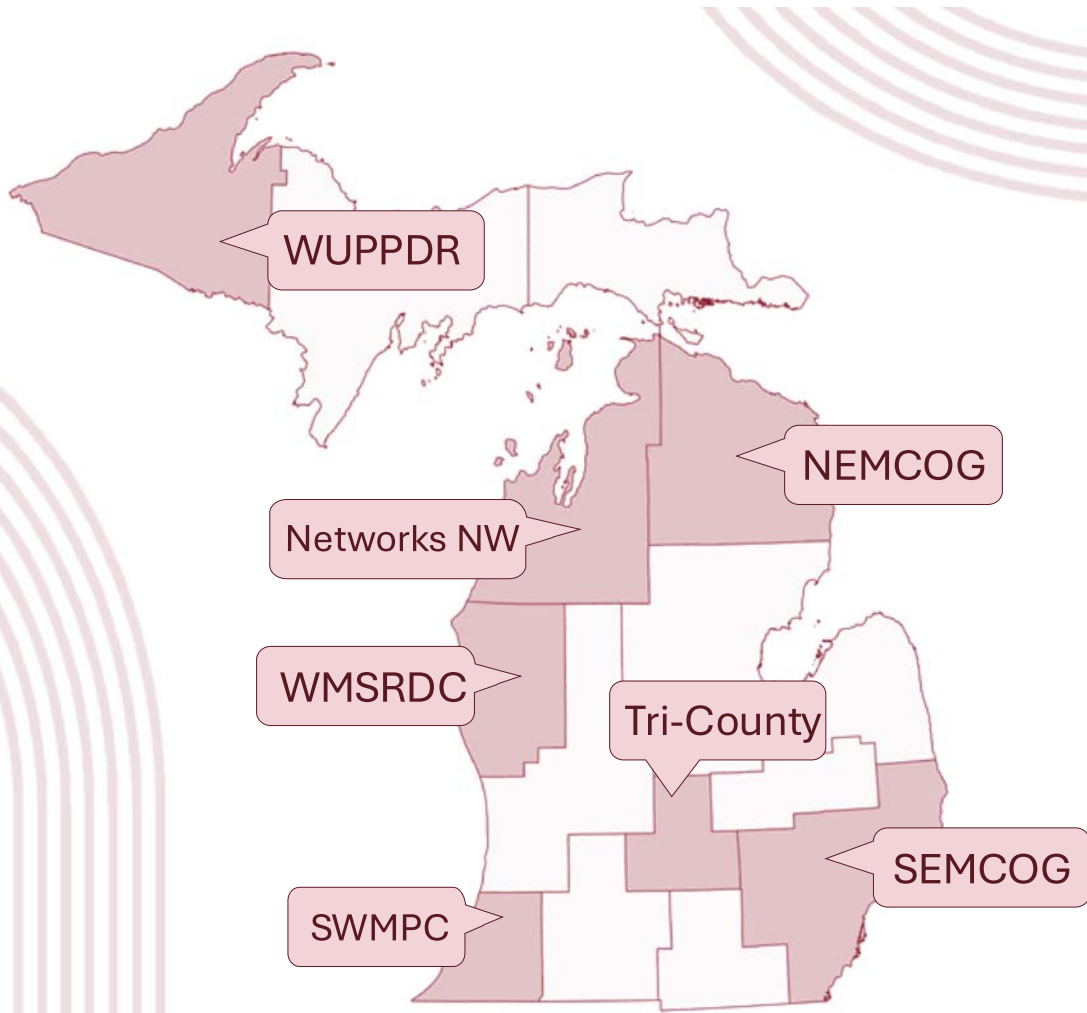
Asset Management Essentials

- ✓ Developed with the Help of **AM Champion Graduates**
- ✓ Condensed Format Designed for **Elected Officials and Decision Makers**
- ✓ **Free Online Primer and Asynchronous eLearning**



Culture of Asset Management





RICH

Pilot Participants



Pilot hosted in Partnership with the Michigan Association of Regions planning agencies

Regional Infrastructure Coordination Hubs



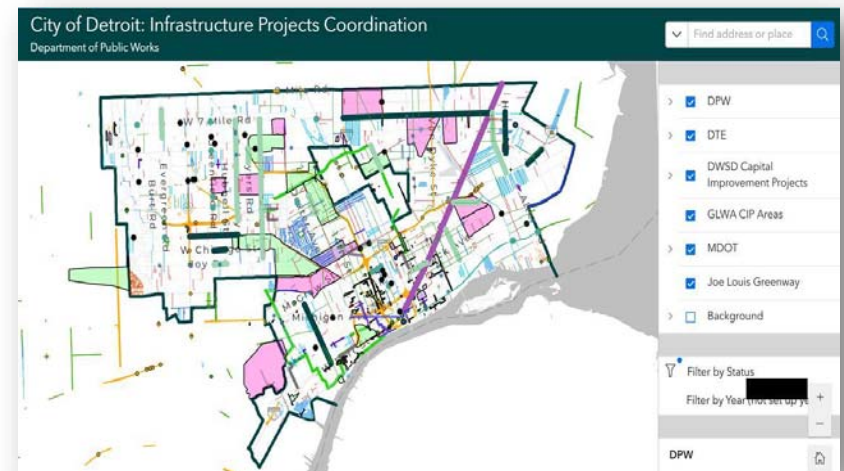
Introduction to RICH and MiDIG

Sarah Plumer, PTP, Planning Manager

Hubbell, Roth and Clark, Inc.

The SEMCOG Region is Ready

- More infrastructure owners = more early infrastructure coordination
- Strength in existing relationships
- Established processes and forums
- Existing leaders in coordination:
 - City of Detroit ICT
 - DTE Energy





Southeast Michigan Regional Infrastructure Coordination Hub (RICH)

Upload your CIP projects to RICH to support early coordination, smarter planning, and stronger funding strategies.

Michigan's public infrastructure—roads, bridges, water and utility systems—is aging, and funding hasn't kept pace with maintenance and replacement needs. Many assets are reaching the end of their useful life, making reactive, failure-based repairs costly and disruptive. Proactive planning and early coordination help communities extend asset life, reduce costs, and better prepare for future needs.

The Michigan Infrastructure Council (MIC) is advancing improved infrastructure management through its 30-Year Strategy, emphasizing data-driven decisions, interagency collaboration, and clear communication among asset owners. Too often, projects are planned in silos—leading to duplication, higher costs, and unnecessary disruptions for residents and businesses.

How to Participate

1

Request an account

You will need a SEMCOG Hub account to participate in this project.

2

Submit your Data

Be a part of the regional picture by submitting your data to the RICH.

3

Enroll in the MiDIG Portal

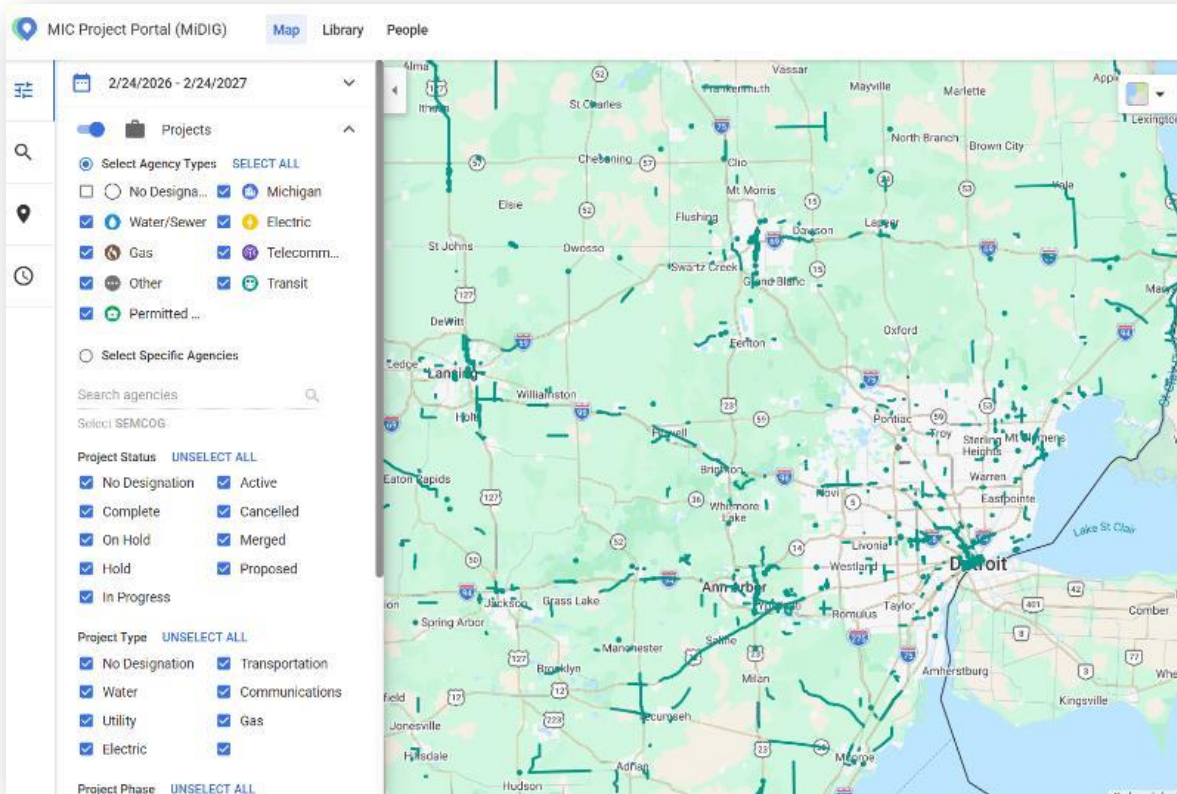
Start using the MiDIG portal for early and enhanced project coordination.

Visit the Hub:



[Southeast Michigan Capital
Improvement Projects Data](https://cip-semcog.hub.arcgis.com)

<https://cip-semcog.hub.arcgis.com>



Learn more about the [MiDIG Portal](https://www.michigan.gov/mic/midig-portal)

<https://www.michigan.gov/mic/midig-portal>

Access the [MiDIG Portal](https://milogintp.michigan.gov)

[MiLogin - Login](https://milogintp.michigan.gov)

<https://milogintp.michigan.gov>

How the RICH and MiDIG work:

Agency adds CIP Data into RICH

SEMCOG | SOUTHEAST MICHIGAN COUNCIL OF GOVERNMENTS

Update data

Select matching fields

Select the fields from Infrastructure_Coordination_Projects.zip that match the fields in Infrastructure_Coordination_Projects. Fields that (that) have are unmatched will not be updated in the hosted feature layer.

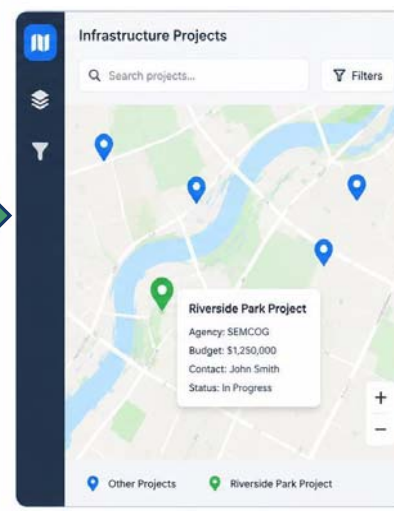
Search

Original field	Uploaded field
Agency	Agency
Budget	Budget
ContactEmail	ContactEmail
ContactName	ContactName
ContactPhone	ContactPhone

RICH transfers data to MiDIG



Agencies view data in MiDIG



What to know before you start

Sarah Plumer, PTP, Planning Manager
Hubbell, Roth and Clark, Inc.

2 steps to signing up

- I. Requesting a RICH account
 - SEMCOG Contact – Chad Misiuk
- II. Enroll in the MiDIG Portal
 - MiDIG Contact – Emilee Madison



Note: Check your SPAM folder!

Stick around for a walk through.

Request an Account

SEMCOG

Use this form to request an account for access to the Southeast Michigan Infrastructure Coordination Portal. We will also create the default items needed to participate in this program.

After you submit your request, you should receive an email from ESRI with your account information, and steps to finish setting up your account.

Once your account is created, you will have secured access to upload your data. Please see the contact information at the bottom of this survey if you need assistance.

First Name*

MiLogin for Business

Michigan's one-stop login solution for business →

Michigan for Business connects you to many State of Michigan business services through a single user ID. Whether you want to submit a Business Proposal, Access Contacts for RealEstateMatters, or view project maps from the State of Michigan, your MiLogin for Business user ID will allow you to easily Michigan government services.

Welcome to **MiLogin for Business**

User ID:

Password:

I agree to the Terms & Conditions, Privacy Policy and the collection, use, storage and sharing of your personal data, and to the collection of sensitive information used in business information and government record identification numbers according to this policy.

Who should participate?

- Engineering
- Public Works
- GIS
- Planning
- Finance
- Project Managers



What type of projects?

- Where cross infrastructure coordination is possible.
- Water Infrastructure / Utilities
 - Along right-of-way, linear assets
 - Do not need facility/plant CIP projects
- Transportation
 - Projects not programmed in the TIP
 - Prioritize reconstructions – best opportunity for coordination





What format should our project data be in?

- RICH is GIS based
- CIP's in pdf, excel, word etc., will need to be input into the RICH portal using ArcGIS Online or ArcGIS Pro.
- Instructions are available on the RICH Page
- Assistance from the team is available

"This is too confusing or I don't have time."

- HRC, Tetra Tech and DLZ are available to assist local agencies with their data inputs.
- Make sure to check the box on the RICH Account Request form. We will reach out to you.



Do you require support in uploading CIP data? SEMCOG can assign a consultant to upload your data.

Yes

No

The information is only as good as what is provided.

- Transportation related projects already programmed in the TIP are in the portal
- Set your own update schedule:
 - recommend two times a year
 - and/or when projects change years and scope

RICH Walkthrough

Chad Misiuk

Data Analysis GIS Coordinator, SEMCOG



Requesting Access to the RICH Portal

- <https://cip-semcog.hub.arcgis.com/>

1. Request an Account

Click the link above to request a SEMCOG ArcGIS Hub account.
It will provide you access to the Southeast Michigan RICH Portal.

To submit your data, either follow the steps outlined in step 2, or let the RICH team handle it!

When creating your account, if you indicate that assistance is needed, The RICH Team consultants will review your request and contact you in the near future. *We will be prioritizing requests based on timing and available resources and may not reach out immediately.*



Process to Submit Data

- The account you create will provide access to ArcGIS Online and an empty feature layer dataset on the RICH Portal.
- A Group is created on ArcGIS Online for your organization. If desired, we can allow access to a consultant to submit the data on your behalf.
- You can choose how to submit data – use ArcGIS Online or ArcGIS Pro

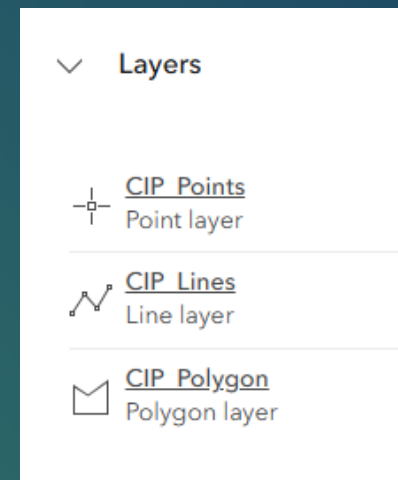


Process to Submit Data (continued)

- If you have GIS data already created, using ArcGIS Pro to append it is the easiest way.
- However, if you do not have GIS data created already, you can use ArcGIS Online to digitize your data into the system.
- We have an empty file geodatabase with the schema and domains setup in it. Feel free to use this to get started, that way, appending the data will go extra smoothly. Compare your data columns to the schema to determine how easily the data append will go.

Project Data Schema Categories

1. Identity
2. Timing
3. Agency
4. Location
5. Actions
6. Financial
7. Privacy



| Identity

Columns

- ProjectID
- ProjectName*

| Timing

Columns

- StartDate*
- EndDate*
- AllDay

Agency

Columns

- Agency*
- UserOwner
- OwnerEmail
- OwnerPhone
- ContactName
- ContactEmail
- ContactPhone

| Location

Columns

- LocationDescription



Actions

Columns

- Status*
- ProjectType
- ProjectPhase
- Excavation
- Website
- ProjectDescription



Financial

Columns

- FundingType
- Budget

| Privacy

Columns

- `DisplayOnPublicViewer`

Domains

Excavation

The project will require excavation of the public right of way for completion

The project will not require excavation of the public right of way for completion

Excavation needs currently unknown

Phase

Work has started onsite

Bid/Permit

Completed

Planning/Design

Under Consideration

N/A

ProjectType

Broadband/Telecom

Electric

Natural Gas

Drinking/Sewer/Storm

Road,Bridge,Rail,Etc.

Status

Cancelled

Complete

On Hold

Active

Merged with Other

AllDay

Yes - no option for time entry, only date

No - time fields are available

DisplayOnPublicViewer

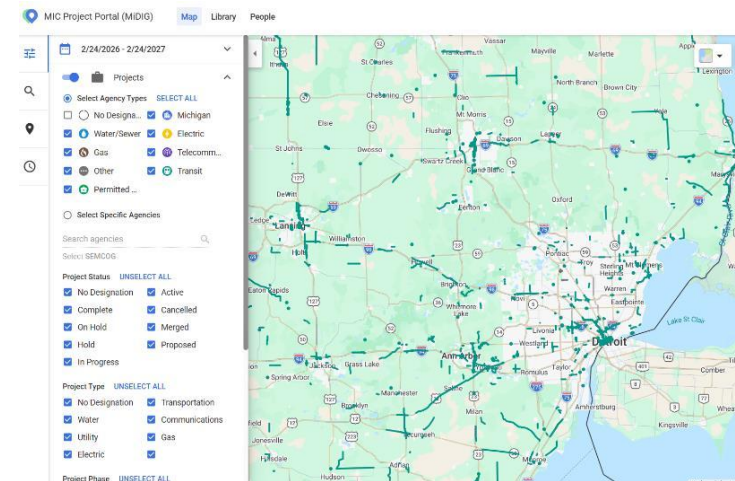
Yes

No

Requesting Access to the MiDIG Portal

- Create a MILOGIN account. [Tutorial](#).
- Once in the MILOGIN system, search for the MIDIG Project Portal.
- Once located, request access to the MIDIG Project Portal.
- Complete the Agency Agreement and User Agreements as necessary.
- Once signed, access will be give to the data in the MIDIG Project Portal.

For more information on the MIDIG Project Portal, visit this [page](#).



Demo of CIP Upload Process

**Emmett Mercier, GIS Department Manager
Hubbell, Roth and Clark, Inc.**

Case Study: DTE

Julie Jozwiak

Regional Manager, DTE



May 12 – SEMCOG Infrastructure Coordination Update

Julie Jozwiak
DTE Energy
Regional Relations Manager-Detroit
Julie.Jozwiak@dteenergy.com
313-600-3725

DTE Executive Champion and MIC Board Member:
Marco Bruzzano, Senior VP Regulatory Affairs

Electric – Power Improvements Map

Gas Main Renewal Map

DTE Billing & Payment Outage Service & Price Emergency & Safety Save Money & Energy DTE Impact & News About Us

Status

Upgrading Existing Infrastructure
 Projected start date: 03/02/2026
 Projected end date: 03/09/2026

Multiple power improvements with similar start and end dates may exist within the area.

Percent complete*

0%
Completion Status

*The completion percentage is updated once a month, which may cause a temporary discrepancy between project end date and the status bar seen above.

Description and impact

Natural Gas System Improvements Map

To find out if we are improving our **natural gas system** in your area, type your address in the search bar where it says "enter a query" or zoom in until you find your street. Tap the line that runs along your street to view details. This map is updated every week. Our schedule is subject to change. Please check back regularly for updates.

Natural gas delivery upgrade brochure

What to expect when DTE crews begin working in your neighborhood.

Southeast Michigan
[English](#)
[Arabic](#)
[Spanish](#)

Other DTE Service Areas
[English](#)
[Arabic](#)
[Spanish](#)

Contact Us

If you have questions or concerns about completed work or ongoing projects, please contact us.



MIC Project Portal (MIDIG) Map Library People

3 years Custom range EDIT

Show fully contained records only
 Show undated records
 Show undated only

Projects
 Groups
 City layers

Congressional Districts
 Minor Civil Divisions
 STIP Project Points

- DTE’s current Electric and Gas data are in 2 different formats
- MIC and SEMCOG are actively supporting an upload flow for both streams of data

Questions? Thanks!